

# MAGFIT™ DX

## 1000/800/600/400



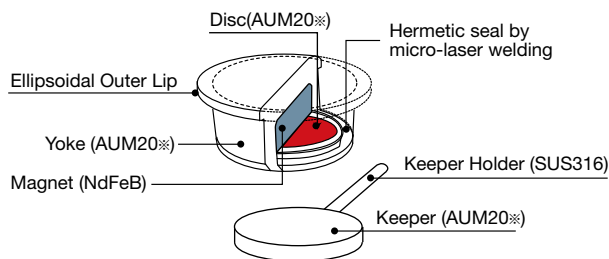
The MAGFIT DX Series is suitable for a wide range of cases, especially for molars where vertical space is limited. It has a thin disk-type design with improved wear resistance. The ellipsoidal outer lip of the magnetic assembly prevents rotation to ensure firm fixation to the denture base. It is 30% shorter than the EX series. Durability has been enhanced by increasing the hardness of the magnet casing. Applicable to a wide range of clinical cases.

### Specifications

#### Basic Performance

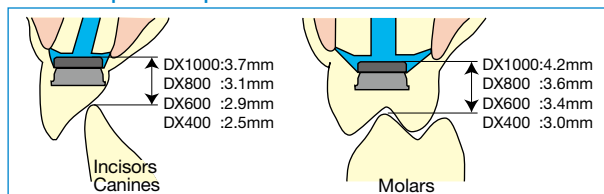
	MAGFIT DX 1000	MAGFIT DX 800	MAGFIT DX 600	MAGFIT DX 400
Attractive Force (gf)	1000	800	600	400
Height (mm)	1.7	1.3	1.2	1.0
Keeper Diameter (mm)	Ø4.6	Ø4.0	Ø3.6	Ø3.0
Dimension of parts (mm)				

#### Structure and Materials



※AUM20 is our proprietary Soft Magnetic Stainless Steel.

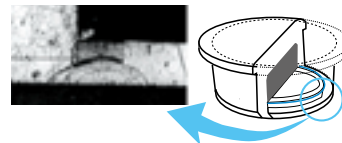
#### Vertical space required for MAGFIT DX



### Reliability

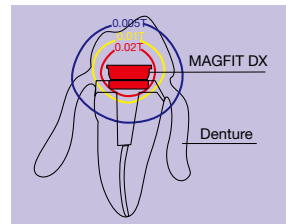
#### Corrosion Prevention

MAGFIT DX utilizes a stainless steel casing hermetically sealed by micro-laser welding to ensure excellent corrosion resistance.



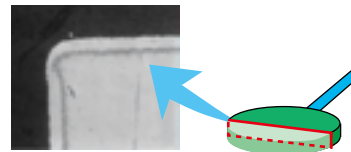
#### Magnetic Field Leakage

Magnetic field leakage at the gingival margin is substantially below the accepted U.S. Safety Standard of 0.02T.



#### Oxidization resistant Keeper

The surface of the keeper is coated with a Cr-rich layer to protect it from oxidization during the casting process.



#### Detachment Prevention

The unique ellipsoidal outer lip is designed with an anti-rotation feature to ensure firm fixation in the denture base.

